

Puffroller 60

Puffroller

Optimal for the storage of chilled and hot water



TECHNICAL FEATURES

- To be integrated on all kind of plants.
- Storage rapidity, abundant and continuous erogation.
- High efficiency for low exercice costs
- Absolute hygiene
- Long durability without corrosion
- Simplicty of installation
- Inside untreated.
- Standard fixture for wall installation for models 60/120 and 200 l.
- The models 60/120 and 200l can be installed in horizontal or vertical position.
- Polyurethane foam insulation 50 mm.
- Prepared for inserting auxiliary electric resistance.

Technical sheet

Description	Unit of measurement	Value
Tank capacity	L	58
Height	mm	935
Insulation tickness	mm	50

Loose accessories

VAS - Mixing safety valve

ADVANTIX SPA

Via San Giuseppe Lavoratore, 24 – Loc. La Macia Z.A.I – 37040 ARCOLE (Verona)

Tel. 0039-0457636585 – 0457636591 – Fax 0039-0457636551

C.F.e P.IVA 01209000239 – Iscritta presso il Tribunale di Verona ai n° 12621/17484 – Capitale Sociale 3.100.000 € i.v.

**AZIENDA CON SISTEMA
DI GESTIONE QUALITÀ
CERTIFICATO DA DNV GL
= ISO 9001 =**

Puffroller 60

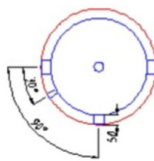
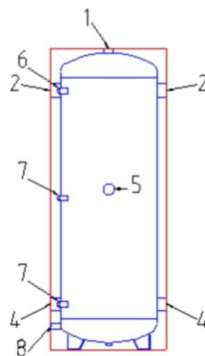
Puffroller

Optimal for the storage of chilled and hot water

VE24AT - 24 liters expansion vessel

Unit dimensional drawings

N°	TIPO DI ATTACCO / CONNECTOR TYPE / ANSCHLUßTYP / TYPE DE CONNEXION	MODELLO / MODEL / MODELL / MODÈLE				
		60 - 120	200 - 280	400	480	750 - 880
1	Sfiato / Air evacuation / Entlüftung / Décharger	1"	1"1/4	1"1/4	1"1/4	1"1/4
2	Mandata caldaia / Boiler inlet / Kessel Vorlauf / Depart chaudiere	1"1/4	1"1/2 - 2"	2"1/2	2"1/2	3"
3	Mandata riscaldamento / Heating inlet / Heizung Vorlauf / Depart chauffage	—	—	—	2"1/2	3"
4	Ritorno caldaia-risc. / Boiler-heating outlet / Kessel-Heiz. RL / Retour chaudiere- chauffage	1"1/4	1"1/2 - 2"	2"1/2	2"1/2	3"
5	Resistenza elettrica / Electric heater / Elektro - Heizstab / Resistance électrique	1"1/2	1"1/2	1"1/2	1"1/2	1"1/2
6	Termometro / Thermometer / Thermometer / Thermometre	1/2"	1/2"	1/2"	1/2"	1/2"
7	Sonda / Feeler / Fühler / Sonde	1/2"	1/2"	1/2"	1/2"	1/2"
8	Scarico / Drain / Entleerung / Purger	1/2"	1/2" - 3/4"	3/4"	3/4"	1"



ADVANTIX SPA

Via San Giuseppe Lavoratore, 24 – Loc. La Macia Z.A.I – 37040 ARCOLE (Verona)

Tel. 0039-0457636585 – 0457636591 – Fax 0039-0457636551

C.F.e P.IVA 01209000239 – Iscritta presso il Tribunale di Verona ai n° 12621/17484 – Capitale Sociale 3.100.000 € i.v.